



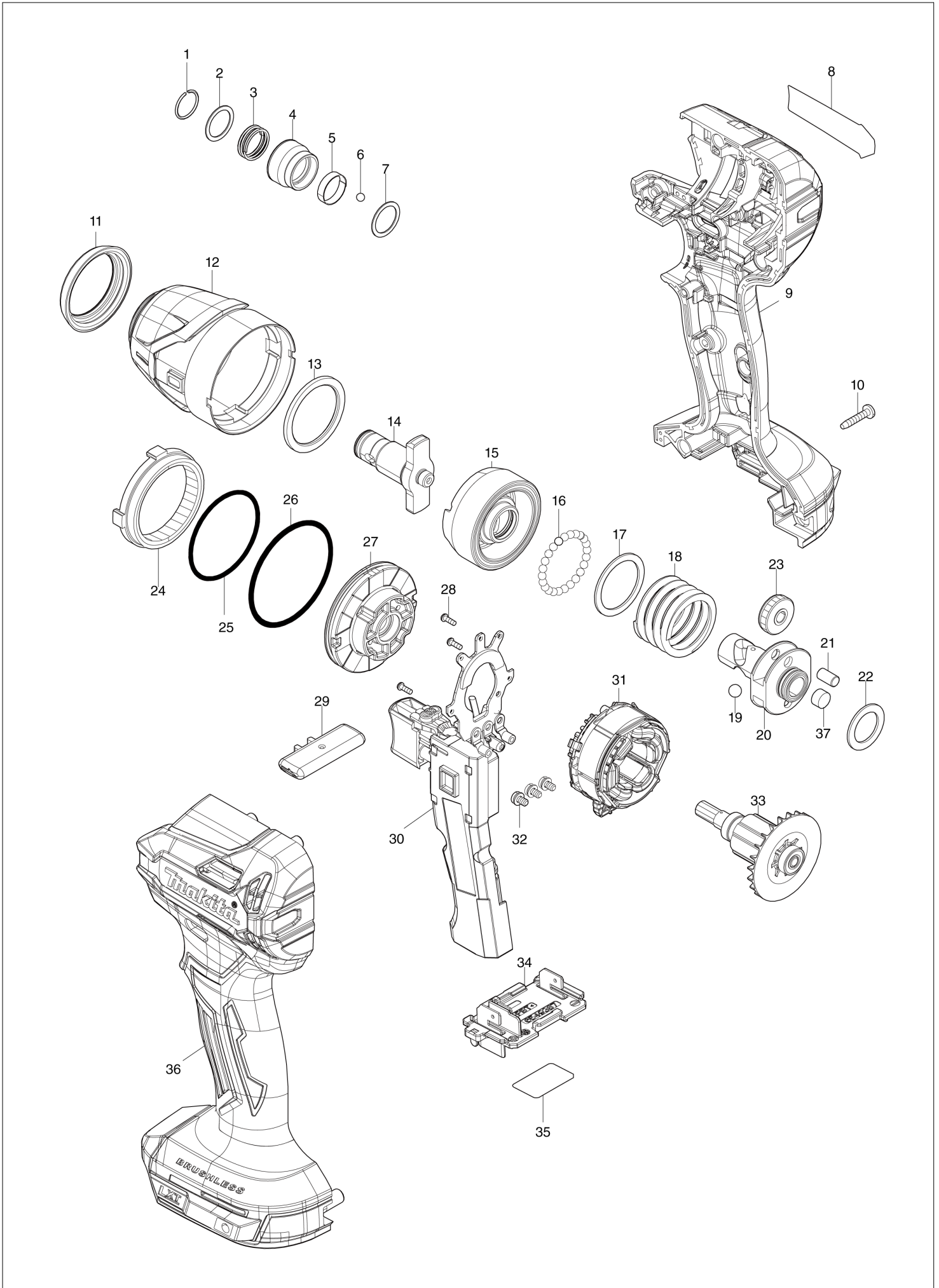
Diagram / Parts List

DTD158

CORDLESS IMPACT DRIVER



(IN) DTD158 / CORDLESS IMPACT DRIVER



IN	INDIA
-----------	--------------

DTD158 / CORDLESS IMPACT DRIVER

Item	Sub	Parts No.	Parts Description	Qty	I/C	E/C No.	Close No.	Remark
001		231952-6	RING SPRING 12	1				
002		253575-0	FLAT WASHER 13	1				
003		232592-3	COMPRESSION SPRING 14	1				
004		327B23-8	BIT SLEEVE	1				
005		232800-2	LEAF SPRING	1				
006		216040-0	STEEL BALL 3.5	2				
007		253575-0	FLAT WASHER 13	1				
008		8155E0-0	DTD158 NAME PLATE	1				
009		1832G6-5	HOUSING SET	1				
	C10	263005-3	RUBBER PIN 6	2				
	C20	263032-0	RUBBER PIN 4	6				
	C30	252126-6	HEX. LOCK NUT M4-7	2				
	D10		INC. 36					
010		266429-2	TAPPING SCREW 3X16	9				
011		422A03-4	BUMPER	1				
012		1412U1-9	HAMMER CASE COMPLETE	1				
013		261168-9	NYLON WASHER 29	1				
014		327G34-3	ANVIL M	1				
015		327B60-2	HAMMER	1				
016		216040-0	STEEL BALL 3.5	24				
017		267175-0	FLAT WASHER 24	1				
018		234251-5	COMPRESSION SPRING 25	1				
019		216041-8	STEEL BALL 5.6	2				
020		327G36-9	SPINDLE	1				
021		256253-1	PIN 5	2				
022		253853-8	FLAT WASHER 15	1				
023		227362-3	SPUR GEAR 22	2				
024		227A92-2	INTERNAL GEAR 51	1				
025		213507-9	O RING 40	1				
026		213606-7	O RING 48	1				
027		4134N6-5	BEARING BOX	1				
028		266490-9	TAPPING SCREW PT 2X6	3				
029		4134N7-3	F/R CHANGE LEVER	1				
030		620T58-9	CONTROL MODULE	1				
031		629224-5	STATOR	1				
032		652069-6	FLAT HEAD SCREW M3X6	3				
033		619933-4	ROTOR	1				
034		654938-7	TERMINAL	1				
035		8155E1-8	DTD158 SERIAL NO. LABEL	1				
036		1832G6-5	HOUSING SET	1				
	C10	263005-3	RUBBER PIN 6	2				
	C20	263032-0	RUBBER PIN 4	6				
	C30	252126-6	HEX. LOCK NUT M4-7	2				
	D10		INC. 9					
037		422B40-4	FELT	1				
A01		266622-8	+ TRUSS HEAD SCREW M4X12	1				
A02A		346317-0	HOOK	1				
A02B		346449-3	HOOK	1				
A02C		346317-0	HOOK	1				
A03A		450128-8	BATTERY COVER	1				
A03B		450128-8	BATTERY COVER	2				
A04A		***DC18WC	DC18WC BATTERY CHARGER	1				
	D10		COMPO-PARTS					
A04B		***DCB18WA	DCB18WA CHARGER	1				
A05A		197605-6	BATTERY BL1830B SET	1				
A05B		1915F6-2	BATTERY BLB182	2				
A06B		832758-1	TOOL BAG	1				
F01		191K57-9	TOOL HANGER SET	1				
F02		194280-9	STOPPER SET (W/O BITS)	1			E3000	
F05		194649-7	BATTERY PROTECTOR	1				
F06		194654-4	HOOK SET	1				

A:DTD158WF(H)
 B:DTD158WVEX(H)
 C:DTD158Z(N)

Interchange
 O : Yes
 X : No
 < : the new part can be substituted for the current.
 > : the current part can be substituted for the new.
 S : Interchangeable as a set.